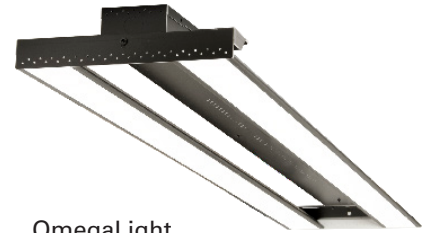




DESCRIPTION

Designed and built in the USA to deliver 100,000 hour life for maintenance-free, exceptional illumination. The OmegaLight is an award-winning, high-performance LED fixture. Constructed of commercially pure aluminum with thermal vias for superior thermal management. Patent-pending thermal management ensures 100,000 hour life expectancy and lumen maintenance. Optimized optics deliver superior quality, glare-free illumination. Proprietary design prevents entry by particulate matter and insects. Engineered for high-performance with world-class components to deliver superior quality light to create better environments and experiences. Fast, easy-to-install design that easily replaces HID, T8 and T5 fluorescent.

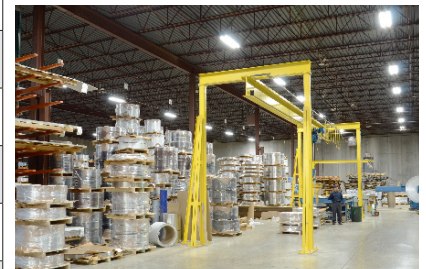
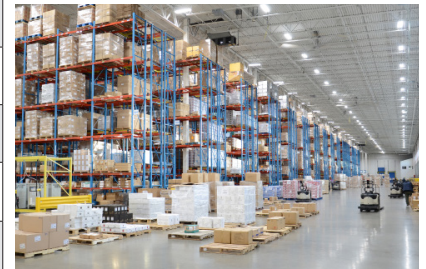


OmegaLight
Lens View

SPECIFICATIONS

Style:	2-array			
Variable Wattage:	105 max	120 max	155 max	180 max
Lumens:	15,410	17,110	22,267	25,480
Weight: (lbs)	6.10 lbs.	11.40 lbs.		
Dimensions:	L 46.10" x W 9.19" x H 3.10"			
Ambient Operating Temperature:	-30° to 50° C / -22° to 122° F			
Color Temp:	5000K			
CRI:	>82			
Line Voltage:	Universal 120-277V standard			
Power Supply:	Hardwire standard. Internal quick connect for other available power supplies.			
Surge Protection:	Integrated 6kV transient voltage protection. Additional 25kA surge protection option.			
Environment:	Damp rated			
Mounting:	10 ft. adjustable hanging cable			
Warranty:	10-year Standard Limited			
Listed:	DLC QPL, ETL			
DLC Product ID:	PG88AP07	PYKZWCYH	P7TVUALQ	PYQDSFRA
Manufacturer:	Genesis Energy Technology			

Specifications subject to change without notice. Longer lead times may apply when ordering options over standard.



Not all products are qualified on the DLC QPL.
To view our DLC qualified products, please consult the DLC Qualified Products List at www.designlights.org/search.

Standard Model DLC Product ID: PYQDSFRA

Quickly and easily replace existing

HID T8 6-LAMP T5 4-LAMP



energybank. OmegaLight® I-Frame 2-Array

ORDERING MATRIX Standard Model: OE180-UNF1-50BL-NSHW-MSXBP-A10

Standard Model configuration highlighted in Gray in matrix below.

To order, create the part number using the matrix below. Lead times and costs may vary depending on options selected.

Consult your sales representative for more information.

Standard Model DLC Product ID: PYQDSFRA

OE		UN		50						
Model	Size/Wattage	Voltage	Lens	Color Temp	Fixture Color	Surge	Power Cord	Controls	Packaging	Hanging Hardware
OE: 4ft. I-Frame	105: 2-Array, 105W	UN: 120-277V	F1: Frosted	50: 5000K	BL: Black	NS: No add'l surge	HW: Hardwire	MSX: No motion sensor	1P: 1-Pack Plain Carton	A06: 6' Adj Hang Cable
	120: 2-Array, 120W		CL: Clear		WH: White	WS: With add'l surge protection	C1: Cord with 5-15P plug	MS#: Motion Control profile 1	1PS: 1-Pack Plain for UPS (small package)	A10: 10' Adj Hang Cable
	155: 2-Array, 155W						CC: Custom cord	MSC: Custom Motion Settings	BP: Bulk Plain Carton 4 pcs.	A15: 15' Adj Hang Cable
	180: 2-Array, 180W						W1: 11ft whip attached	WMS: Wired for 0-10V		NHH: Hanging Hardware sold separately
	210: 2-Array, 210W						BB: 12W Battery Backup	IR#: IR-Tec Trans, Black Lens Profile #		
								IRC: IR-Tec Trans, Black Lens custom settings		
								RJ4: RJ4 Access plate		
								ERD: EnOcean Control with AC Relay		
								EDD: EnOcean Control low voltage		
								EG1: Control: 10 min. / 30% IR Motion with EnOcean low voltage		
								EG2: Control: 10 min. / 0% IR Motion with EnOcean low voltage		
								EG3: Control: 2 min. / 0% IR Motion with EnOcean low voltage		
								EG4: Control: 2 min. / 30% IR Motion with EnOcean low voltage		
								G11: Control: 10 min. / 30% IR Motion		
								G12: Control: 10 min. / 0% IR Motion		
								G13: Control: 2 min. / 0% IR Motion		
								G14: Control: 2 min. / 30% IR Motion		