

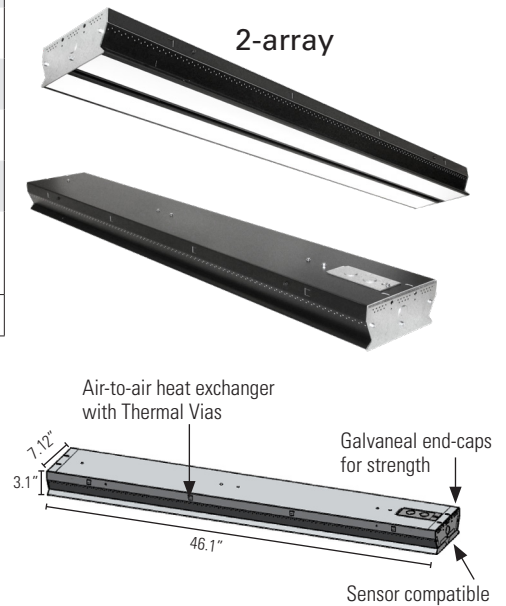
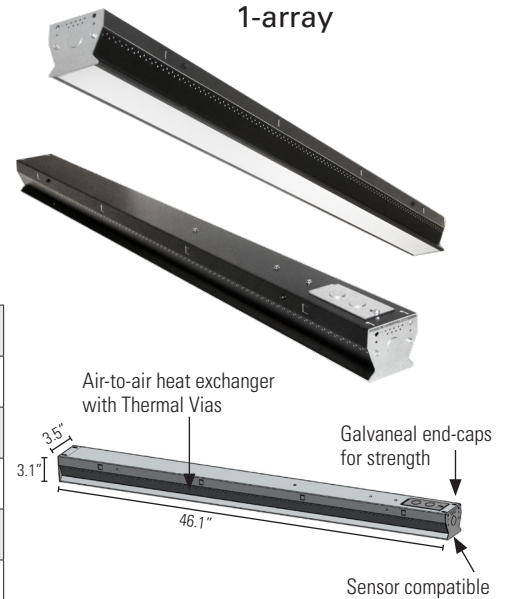


## DESCRIPTION

Designed and built in the USA to deliver 100,000 hour life for maintenance-free, exceptional illumination. The OmegaLight Linear 2.0 is a high-performance LED fixture. Optimized optics with proprietary design prevent entry by particulate matter and insects and is integrated with a patent-pending air-to-air heat exchanger constructed of commercially pure aluminum for superior thermal management. Fast, easy-to-install design that easily replaces HID, T8 and T5 fluorescent.

## SPECIFICATIONS

Style:	1-array		2-array	
<b>Wattage:</b>	105	120	180	210
<b>Lumens:</b> (without lens)	16,319	17,468	28,830	31,170
<b>Weight:</b> (lbs)	5.85	6.30	9.25	9.55
<b>Dimensions:</b>	L 46.10" x W 3.50" x H 3.10"		L 46.10" x W 7.120" x H 3.10"	
<b>Ambient Operating Temperature:</b>	-30° to 50° C -22° to 122° F	-30° to 45° C -22° to 113° F	-30° to 50° C -22° to 122° F	-30° to 45° C -22° to 113° F
<b>Color Temp:</b>	5000K			
<b>CRI:</b>	>80			
<b>Line Voltage:</b>	Universal 120-277V standard.			
<b>Environment:</b>	Damp rated.			
<b>Warranty:</b>	10-year Standard Limited.			
<b>Manufacturer:</b>	Genesis Energy Technology (A wholly-owned subsidiary of Energy Bank Inc.)			
<i>Specifications subject to change without notice. Longer lead times may apply when ordering options over standard.</i>				



Not all products are qualified on the DLC QPL. To view our DLC qualified products, please consult the DLC Qualified Products List at [www.designlights.org/search](http://www.designlights.org/search).



**AMERICAN INNOVATION**  
MADE IN USA  
of U.S. and imported parts

# OmegaLight® 2.0 Linear

## ORDERING INFORMATION

To order, create the part number using the matrix below. **Example: OL21J105-UNFR-50BL-NSHW-MSX-BP-Nxx.** Standard configuration highlighted in Gray. Lead times and costs may vary depending on options selected. Consult your sales representative for more information.

To search listing on DLC QPL, enter characters from only the first 5 categories shown below. **Example: OL21J105-UNFR-50**

OL2		UN		50		NS	HW		BP	
Model	Wattage	Voltage	Optics	Color Temp	Fixture Color	Surge	Power Supply	Controls	Packaging	Hanging Hardware
<b>OL2: OmegaLight Linear 2.0</b>	<b>1J105: 105W</b> <b>1N105: 105W</b> <i>(1-array)</i>	<b>UN: 120-277V</b>	<b>FR: Frosted</b>	<b>50: 5000K</b>	<b>BL: Black</b>	<b>NS: No surge</b>	<b>HW: Hardwire</b>	<b>MSX: No sensor</b>	<b>BP: Bulk plain carton</b>	<b>V: V-Hook only, no adj. cable</b>
	<b>1K120: 120W</b> <i>(1-array)</i>		<b>NL: No lens</b>		<b>WH: White</b>			<b>MS1: 5 min/5hr</b>		<b>V10: V-Hook with 10 ft. adj. hanging cable</b>
	<b>2L180: 180W</b> <b>2N180: 180W</b> <i>(2-array)</i>							<b>MS2: 15 min/5 hr</b>		
								<b>MS3: 30 min/5 hr</b>		
								<b>MS4: 5 min/1 hr</b>		
								<b>MS5: 15 min/1 hr</b>		
	<b>2M210: 210W</b> <b>2N210: 210W</b> <i>(2-array)</i>							<b>MSC: Custom</b>		
								<b>WMS: Wired for 0-10V</b>		
								<b>RJ4: RJ45 Access plate</b>		

NOTE: 1N & 2N models are available with Dim-to-Off and Auxiliary voltage output. Contact representative for details.  
Specifications subject to change without notice.

## Hanging Hardware



V-Hook Hangers



10 ft. Hanging Cable with Adjustable V-Hooks

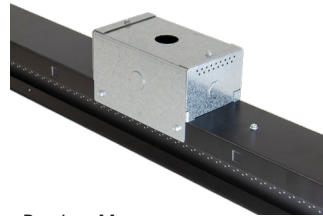
## Accessories



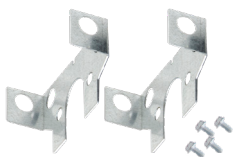
Motion Control Sensor



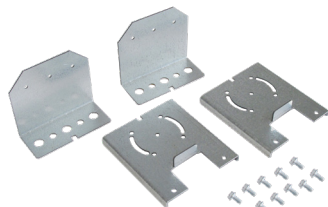
RJ45 Connecting Plate  
*(RJ45 used for dimming control only, not AC power)*



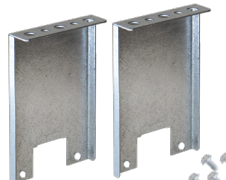
Pendant Mount



Conduit Brackets



Adjustable 0° to 45° Angle Brackets



4-inch Rigid Brackets



6-inch Rigid Brackets



energybank.

www.energybankinc.com Patents: <https://energybankinc.com/ip.html>