



# energybank. ThinLine® LED Troffer Series

Date:	
Type:	
Firm:	
Project:	

## PRODUCT DESCRIPTION

ThinLine redefines the troffer. Designed for quick, easy installation featuring a sleek, contemporary, ultra-compact design. You can replace a typical fluorescent troffer using up to 172W with a single ThinLine that uses only 25W. Field adjustable from 6 - 60W with optional potentiometer. With over 100,000 hour life, ThinLine fixtures provide high-quality illumination for years to come with zero maintenance costs. Optional aluminum troffer extensions in either reflective Optical White or non-reflective Matte White. These extensions allow for fast, easy installation into conventional 2 x 4 ft grids. The extensions come pre-attached to the ThinLine fixture, no on-site assembly required. Constructed of 98% pure 3105 aluminum with a durable, composite polyester exterior finish. White is standard.

## PERFORMANCE SUMMARY

<b>Light Engine:</b> Osram driver and LED boards
<b>Color Temp:</b> 4000K
<b>CRI:</b> >82 + R9
<b>Lumens (nominal):</b> 2,900 (25W) to 5,500 (60W)
<b>Input Voltage:</b> 120-277V
<b>Optics:</b> white lens
<b>Certification:</b> UL Listed
<b>Warranty:</b> 5-year standard limited
<b>Application:</b> 2x4 ceiling grid
<b>Power Consumption:</b> 25W standard. Field adjustable from 6 - 60W with optional potentiometer.
<b>Manufacturer:</b> Genesis Energy Technology

## ORDERING INFORMATION

Determine part number\* for placing order.  
 EXAMPLE: TL25-UNF2-40WH-WMW-HWMSX

Lead times will vary depending on options selected. Consult your sales representative.

	TL	UN	F2		WH			HW		
	Model	Wattage (nominal)	Voltage	Optics	Color Temp	Fixture Color	Side Size	Side Color	Power Supply	Motion Sensor
STANDARD IN YELLOW	TL: ThinLine	25: 25W	UN: 120-277V	F2: white lens	40: 4000K	WH: white	W: T-Bar	MW: matte white	HW: hardwire	MSX: no sensor
		45: 45W			50: 5000K			WH: optical white		
		60: 60W					P: Panel			



### ThinLine T-Bar

LED 4000K 25W light engine and 85% transmissive lens for use in acoustic tile ceilings.

### T-Bar model:

- L 47.950 in.
- H 3.624 in.
- W 4.653 in.
- 3.5 lbs.



Front and back views



### Matte White Side Panel

ThinLine with optional Matte White metal 2 x 4 ft troffer extension.

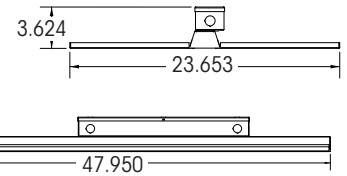


### Optical White Side Panel

ThinLine with optional Optical White metal 2 x 4 ft troffer extension.

### side panel model

- L 47.950 in.
- H 3.624 in.
- W 23.653 in.
- 7.2 lbs.



AMERICAN MADE INNOVATION

\*For additional custom options, call your sales representative for details. Additional charges may apply to non-standard options.

ThinLine® LED Troffer Series  
STANDARD SPECIFICATIONS:

25

45

60

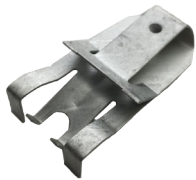
spec	details							
	color temperature	4000K						
CRI	>82 + R9							
lifetime	100,000 hours							
lumens (nominal)	2900			4400				5500
power consumption	25W			45W				60W
input voltage	120-277V							
power supply	Hardwire							
optics	White lens							
driver	Osram							
LED board	Osram							
dimensions (L"xH"xW")	T-Bar Model: L 47.950" x H 3.624" x W 4.653"							
	Side Panel Model : L 47.950" x H 3.624" x W 23.653"							
weight	T-Bar Model: 3.5 lbs.							
	Side Panel Model : 7.2 lbs.							
housing	98% pure 3105 aluminum with durable, composite polyester exterior finish							
color	Matte white							
certification	UL listed							
motion	Optional potentiometer 6-60W dimming control							
warranty	5-year standard limited							
operating temp at 30W	-30° to 40° C -22° to 104° F							
Manufacturer:	Genesis Energy Technology							

One GTT-TL included, attached to fixture.

Tether (GTT-TL)



Hurricane clip (GHC-TL)



Additional GTT-TL and GHC-TL may be purchased separately.